

WMAP

INTERCHANISM

MECHANISM

PRE-EQUIPPED

WOLTMANN METER

 **EG METAL**
El Gohary For Water Meters



Tel: +202 35390027, Tel: +202 35390028, Fax: +202 35390029
Cairo Alexandria Desert Road , Km 28 ,Behind Smart Village Area 98 A.

We reserve the right to introduce any modification which may improve the quality of our product. Our technical staff is at your service for further information and to help you solve your technical problems.

WMPA

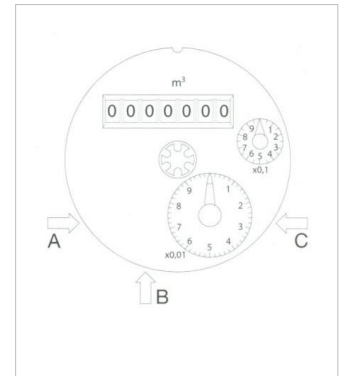
Interchangeable Mechanism Pre-equipped Woltmann Meter

THE PRODUCT

WMPA is woltmann meter for cold water 40°C of interchangeable Mechanism and axial helix type. (the axis of the helix coincides with that one the pipeline). The meter is supplied pre-set for 3 impulse outputs which can be easily activated after the installation of the meter itself. On request the meter can be produced with materials suitable for use with hot water up to 90°C. The dial is of dry type with magnetic transmission and straight reading on 7 numbered drums (max reading 10.000.000 m³) for sizes 50-125 mm, on 8 numbered drums (100.000.000 m³) for sizes 150-200 mm.



(1) Lockable lid



(2) Reed switch and opto pre-setting

STRUCTURAL CHARACTERISTICS

- Body in cast iron with epoxy paint finish flanged to UNI PN 10 or 16 pressure rating
- Helix in non hygroscopic, antimagnetic, undeformable and wear resistant, plastic material.
- Lockable lid in metal. (1)
- Pre-set for 3 impulse outputs (2 reed switches and 1 optoelectronic). (2)

FUNCTIONAL CHARACTERISTICS

- Hydraulic performance according EEC 75/33 Class B.
- The meter is approved according EEC Class B.
- On request the meter can be supplied with EEC mark certifying that initial verification has been carried out.

DIMENSIONS AND HYDRAULIC PERFORMANCE

DIAMETER	mm	50	65	80	100	125	150	200
	inches	2"	2.½"	3"	4"	5"	6"	8"
Qmin (± 5 %)	m ³ /h	0.45	0.75	1.2	1.2	1.2	2.5	4
Qt (± 2 %)	m ³ /h	1	1.2	2	2	2	12	12
Qn (EEC)	m ³ /h	15	25	40	60	100	150	250
Qn	m ³ /h	25	40	100	125	125	225	325
Qmax	m ³ /h	50	80	200	250	250	450	650
Max flowrate with Δp 0.1bar	m ³ /h	35	60	120	120	120	310	600
Nominal Pressure PN	bar	10-16	10-16	10-16	10-16	10-16	10-16	10-16
Maximum Reading	m ³	10 ⁷	10 ⁷	10 ⁷	10 ⁷	10 ⁷	10 ⁷	10 ⁷
Minimum Reading	1	2	2	2	2	2	20	20
Weight	kg	12.5	14	15	18	20	31.5	46
Body length	mm	200	200	225	250	250	300	350
Reed switch pre-set (B - C)	m ³	0.1-1	0.1-1	0.1-1	0.1-1	0.1-1	1-10	1-10
Other pulse (on request)	m ³	0.01	0.01	0.01	0.01	0.01	0.1	0.1
Opto pre-set (A)	m ³	0.001	0.001	0.001	0.001	0.001	0.01	0.01



Tel: +202 35390027, Tel: +202 35390028, Fax: +202 35390029
Cairo Alexandria Desert Road, Km 28, Behind Smart Village Area 98 A.

We reserve the right to introduce any modification which may improve the quality of our product. Our technical staff is at your service for further information and to help you solve your technical problems.